

Uniform Options: **Solid Colors Only**

Black	Burgundy	Gold	Gray	Khaki	Navy Blue	Red	Royal Blue	White
Austin	Burleson	Hays	Zavala	GP	Alamo			
Bottoms	Bottoms	Bottoms	Bottoms	Tops / Bottoms	Bottoms	Bottoms	Bottoms	Bottoms
Tops	Tops	Tops	Tops	Tops	Tops	Tops	Tops	Tops
Tops / Bottoms	Tops / Bottoms	Tops / Bottoms	Tops / Bottoms	Tops / Bottoms	Tops / Bottoms	Tops / Bottoms	Tops / Bottoms	Tops / Bottoms

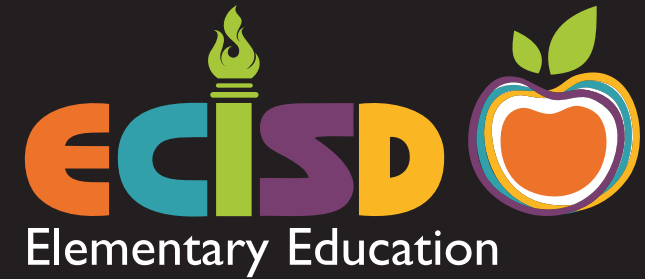
The mission of the ECISD community, a passionate, unified, world class leader in education, is to develop world ready, life-long learners who discover their unique gifts, achieve personal success, and fuel their community by building unified, comprehensive community support and participation that fosters a standard of excellence; serving as advocate and steward for all students; ensuring relevant teaching, engaged learning, and dynamic innovation; and maximizing all available resources.

If you have questions about the dress code policy, please contact an Elementary School campus administrator. The campus administrator reserves the right to make final decisions and revisions concerning the dress code.

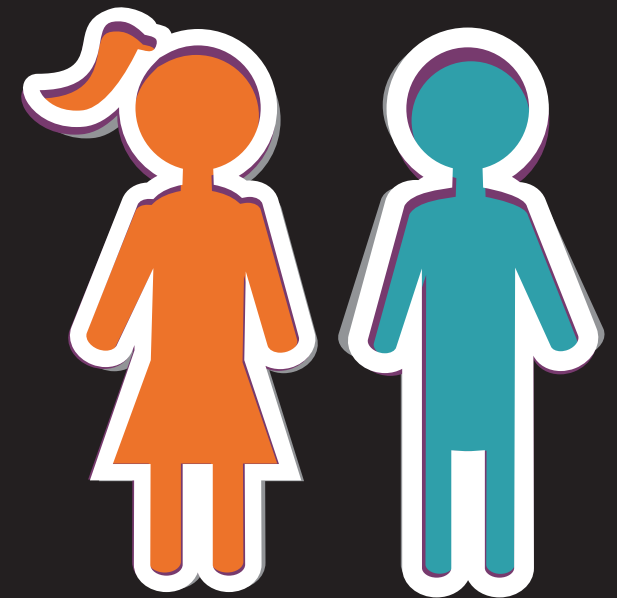
Ector County ISD
 802 N. Sam Houston
 Odessa, Texas 79761

(432) 456-0000

www.ectorcountyisd.org



Standard Attire Regulations



educate connect inspire succeed dream

Ector County ISD does not discriminate on the basis of gender, age, race, nationality, religion, disability, socioeconomic standing or non-proficiency in English language skills in providing educational services for students' benefit.



Uniform Elementary Schools
Austin | Burlleson | GP Alamo | Hays | Zavala

What to Wear:

PANTS / SHORTS

- Dress pants or dockers style pants, shorts, skirts, capris, skorts and jumpers are acceptable.
- Dresses, skirts, shorts and skorts must be no shorter than five inches from the top of the kneecap. Pants, shorts and slacks must be worn at the natural waistline.
- No cargo style or patched pockets on any garment allowed (no elastic band/drawstring in waist or bottom of pant legs/ankles).

SHIRTS / TOPS

- Long/short sleeved collared shirts (polo type or oxford style are acceptable) and must be tucked in during the school day.
- A long sleeved undershirt is acceptable only under a standard attire shirt in acceptable school colors. Both shirts must be a solid school color.

SWEATERS / SWEATSHIRTS

- Must be worn over a collared standard attire shirt; the one size larger rule applies.
- No hoods, zippers or pockets on sweatshirts.
- May be worn inside building as long as standard attire guidelines are met and they are not tied around the waist.

BELTS

- A belt must be worn at all times if the garment has belt loops.
- Only a plain, solid or braided black or brown leather belt with a standard buckle is acceptable.

COATS / JACKETS

- Must be left in locker while in the building.
- Note:** Austin Montessori students have additional guidelines available at the school.



OTHER PROVISIONS

- Colors of garments are determined by a campus committee that includes parents.
- Students must wear shoes at all times—taps, metal plates, or cleats on shoes will not be permitted; prohibited footwear includes slippers or footwear not intended for outdoor wear or shoes equipped with roller blades/wheels. Flip flops are acceptable.
- Student ID's must be worn with a school issued lanyard on campus as part of standard attire.
- Clothing must be worn the way it was designed to be worn; all logos must be removed from garments; one size larger rule applies to all clothing.
- Students may not wear hats, caps, sweat bands, visors, head coverings, or bandanas in the building; bandanas are not allowed on campus.
- Undergarments may not be visible through clothing.
- Disruptive, unsafe or distractive modes of clothes, eyewear, tattoos or appearances that adversely impact the education process are not acceptable. Included in this category are slit skirts, skin tight clothing, clothing with holes or frays.
- Tattoos must be covered at all times.