

GALE POND ALAMO PRE-K TEAM



Meet The Teachers



Glinda Thompson

Pre-K Teacher

I love reading,
going to the
movies, and
teaching
students!



Eva Wells

Pre-K Aide

I love crafting,
decorating, and
traveling. I can't
wait to meet my
students.

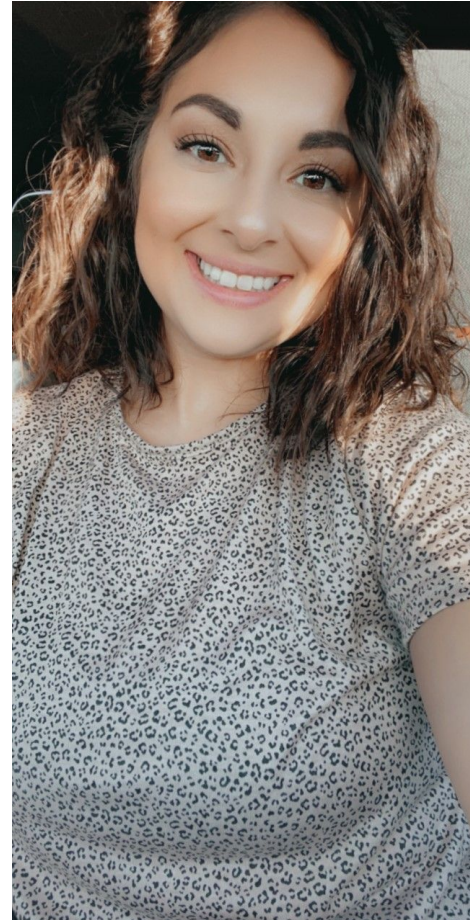
Meet The Teachers



Karen Cole

Pre-K Teacher

I love reading and educating students! I am very excited for this year.



Danielle De La Rosa

Pre-K Aide

I love spending time with my kids and my dogs. I'm excited to meet my new students.



- Phase One Students will begin Face to Face Learning at Alamo on August 12.
- 7:30-3:20
- Alamo will not have magnet hour for the first 9 weeks. Students will be dismissed at 3:20 PM.

- Phase Two Students and Remote Learning Students will begin remote learning on August 12th.
- Each Day there will be a live Google Meets Calendar Meeting with your teacher at 8:30 A.M
- Other daily activities may be completed asynchronously through out each day on Seesaw.

Attendance



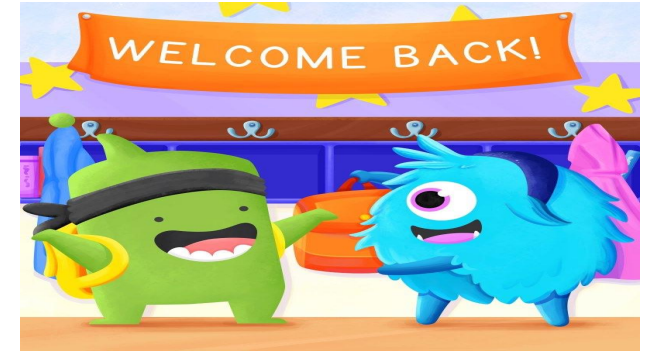
- Face to Face Students are to be at school by 7:30
- After 10 absences, tardies and leaving early (a combination) it will affect your magnet contract.
- Remote Learners must complete their **daily** activity to be considered present for that day.
 - If the student does not complete activities or contact the teacher each day, the student will be considered absent.

School Wide Discipline

DISCIPLINE:

- Student discipline is imperative in student learning. Children who are unable to control their behavior will face consequences. The following is a list rules children are expected to follow:
- Do not be disrespectful to others: a. Unkind to others, b. Bullying, c. Foul language, d. dishonest
- Keep hands, feet and other objects to yourself: a. Out of seat, b. Hitting, pushing or fighting, c. Throwing items, d. Bothering/taking others property, e. Disobeying hall rules, f. Running or jumping in school.
- Do not disrupt the learning environment: a. Talking without raising hand, b. Not following directions, c. Shouting, d. Interrupting while another person is talking, e. Passing notes.
- Be on time to class with all assignments and materials and ready to work: a. Did not return homework, b. Not returning signed calendar/folder, c. Not doing independent work, d. Not participating in group work, e. Not paying attention, f. Playing instead of listening

Class Dojo



- A great source of communication will be Class Dojo.
- Important announcements by teachers and principals will be posted here.
- Class Dojo allows you to direct message your child's teachers!
- **You will be receiving a text message Class Dojo Code from the Kinder Team at the number you provided at registration.**
- We will be using class dojo to set up our remote learning applications- Classlink, SeeSaw, & Google Meets. :)
- Sign up Today!

Seesaw Sign Up



- Seesaw is the application students will be using to collaborate and turn in activities!
- Find Seesaw on Classlink
- Click "I'm a Student"
- Scan this code

- If you have any trouble email
- kadye.bedell@ectorcountyisd.org

Teacher Contact Information

Ms. Thompson Email: glinda.thompson@ectorcountyisd.org

Ms. Wells Email: eva.scoggins@ectorcountyisd.org

Mrs. Cole Email: karen.cole@ectorcountyisd.org

Ms. De La Rosa: danielle.delarosa@ectorcountyisd.org

Technology Support: Mrs. Fuqua Email: kadye.bedell@ectorcountyisd.org

****please contact Mrs. Fuqua for any technology related questions.**

Alamo Main Phone Number: (432)456-1010